



Your veterans.
Their stories.

Nov. 5 - 15, 2015
Tickets available at
www.peppermintcreek.org

MSU DEPARTMENT OF THEATRE
THEATRE.MSU.EDU
WHARTONCENTER.COM OR 1-800-WHARTON



STAGE DOOR

By Edna Ferber and George S. Kaufman
NOVEMBER 13-22, 2015
PASANT THEATRE



Directed by Rob Roznowski

Sept. 24 - Nov. 1, 2015



An encore presentation
from our first season!

Directed by Tony Caselli

Featuring:
Tobin Hissong and John Leopard

A co-production with Tipping Point Theatre.



Williamston Theatre
122 S. Putnam Street
Williamston, MI 48895
517-655-SHOW (7469)
www.williamstontheatre.org

THE OWOSSO COMMUNITY PLAYERS PRESENT

GHOST

THE MUSICAL

Book & Lyrics by BRUCE JOEL RUBIN
Music & Lyrics by DAVE STEWART & GLEN BALLARD
Unchained Melody written by Hy Zieff and Alex North, courtesy of Unchained Melody Publishing, LLC.

Tickets available online
or at the box office
www.owossoplayers.com
114 E. Main Street
Owosso
989-723-4003

BELIEVE

NOVEMBER 6, 7, 13, 14
8:00 P.M.
NOVEMBER 8, 14, 15
3:00 P.M.

GENEROUSLY SPONSORED BY NELSON HOUSE FUNERAL HOMES

imáGen



FOR TONIGHT

A NEW MUSICAL

MUSIC and LYRICS BY
Shenelle Williams and Spencer Williams
BOOK BY Whitney Rhodes,
Shenelle Williams and Spencer Williams

OCTOBER 23 - 24, 2015
PASANT THEATRE



DEPARTMENT OF THEATRE
www.theatre.msu.edu

MSU FEDERAL CREDIT UNION
institute for **ARTS & Creativity**
at whartoncenter

FOR TONIGHT

A NEW MUSICAL

Music and Lyrics by
Shenelle Williams and **Spencer Williams**

Book by **Whitney Rhodes**,
Shenelle Williams and **Spencer Williams**

Musical Director
Dave Wendelberger

Directed and Choreographed by
Joe Barros[^]

CAST

Haydon	Adam Theodore Barry*
Mirela	Hannah Elles*
Thomas	Lukas Jacob
Nettie	Hannah Martin
Winn	Trevor Earley
Molly	Shelby Antel
Romani Female	Janette Angelini
Romani Male	Greg Hunter**
Mrs. Parry	Katie Noyes
Mr. Parry	Jonathan Hamilton
Mrs. Conlan	Hannah Wielgat
Young Haydon	Ethan Drexler Kohagen
Young Thomas	James Martin
Young Nettie	Fiona Colson
Haydon Understudy	Jacob Covert
Mirela Understudy	Katelyn Hodge
Ensemble	Isabella Jolie Abuan
	Emma Callis
	Rachel Dec
	Ryan Duda
	Roberta Glennon-Rule
	Joe Hostnik
	Blaine Mizer
	Hannah Robbe
	Bronson Sacker
	Sydney Schneider
	Joy Yarrington

[^]Member of Stage Directors and Choreographers Society

*Member of Actors' Equity Association

**Master of Fine Arts Candidate

About ĩmáGen

Imagine your student in concert on the Pasant stage at Wharton Center in a cast of select high school performers, students from MSU's Department of Theatre, and top Broadway actors. All led by professional musical and theatre directors from New York City...

ĩmáGen – a unique collaboration between MSU Federal Credit Union Institute for Arts & Creativity at Wharton Center and MSU's Department of Theatre in the College of Arts and Letters, who are joining forces to build community and educational outreach. An elite group of students from high school through grad school will have the opportunity to work one-on-one or in groups with leaders in the Broadway industry, ranging from singers, dancers, theatrical and musical directors, to composers of new works and top designers. Participation in the program is free of charge and by audition only.

228 Museum Drive, across from the Lansing Center

7 years "Top of the Town" theatre in City Pulse Poll!

Riverwalk Theatre

Anne Frank

Drama by Frances Goodrich & Albert Hackett
Directed by Janet Colson

A young Jewish girl hides for two years with her family during the Nazi occupation — marking the 70th anniversary of Anne Frank's death and the liberation of the concentration camps.

Oct. 22-25 & 29-Nov. 1, 2015

7pm BARGAIN THURSDAY \$10/\$8
\$15/\$12 - 8pm Fri/Sat; 2pm Sun

517-482-5700 - RiverwalkTheatre.com



Follow the MSU

Department of Theatre!



[facebook.com/
MI.State.Theatre](https://facebook.com/MI.State.Theatre)



[twitter.com/
MI_StateTheatre](https://twitter.com/MI_StateTheatre)



[youtube.com/user/
MichiganStateTheatre](https://youtube.com/user/MichiganStateTheatre)

WHO'S WHO IN THE CAST

the Witch and the Wardrobe (Edmund) and *Chess* (Ensemble), last year's ĩmáGen show. **Blaine Mizer** (*Ensemble*) – Commerce, MI; Senior BFA Acting. Blaine was last seen as Tommy Ross in MSU's production of *Carrie, the Musical* and as a Witch in *Macbeth*. After graduation, Blaine plans to make the move to NEW YORK CITY! He is so excited to work with everyone on *For Tonight!*

Katie Noyes (*Mrs. Parry*) – Portage, MI; Senior BFA Acting. You may have recently seen her in the SCT productions of *The Tail of Peter Rabbit* (Flopsy/Mopsy/Cotton-tail, Cat) and *Mr. Burns* (Jenny/Marge). Some of her credits include *Carrie* (Frieda, u/s Sue), *Sirens* (Leah, Siren, Waitress) at the Williamston Theatre, *Blue's Clues Live* (Tickety Tock) at Farmers Alley Theatre and many other productions around the Kalamazoo area including *Hairspray* (Tracy), *The Wedding Singer* (Holly) and *White Christmas* (dance ensemble). Katie would like to thank her wonderful cast, crew, and production staff for this incredible opportunity!

Hannah Robbe (*Ensemble*) – Saint Johns, MI; Sophomore, Life Tech Academy. This will be Hannah's first performance with ĩmáGen, and her favorite musical she has been in so far was *Titanic the musical* with Homeschool Performing Arts. Hannah would like to thank her friends and family for their love and support!

Bronsyn Sacker (*Ensemble*) – Fowlerville, MI; Junior, Edgenuity On Line Academy. Bronsyn feels so humbled and honored to be a part of such an amazing experience with *For Tonight*. "This show makes me feel vulnerable and I love that!" Bronsyn loves putting a piece of herself into all she does and *For Tonight* harnesses that with such ease. She was recently seen as Ariel in FCT's *Footloose* and will be seen as Violet Bick in *Its A Wonderful Life* in November. "Enjoy this empowering piece of art!"

Sydney Schneider (*Ensemble*) – Portland, MI; Sophomore Portland HS. Sydney has appeared in *Bye Bye Birdie*, *Annie*, and *Newsies* at the Portland Civic Players theatre. Last summer, she participated in the Advanced Musical Theatre Intensive, *Take it from the Top* at the Wharton Center. She would like to thank her family for supporting her.

Hannah Wielgat (*Mrs. Conlan*) – Royal Oak, MI; Sophomore BFA Acting. This is her first semester as a BFA in Theatre. She has been singing in choirs since 4th grade so she is very excited for her first performance on a stage with the MSU DOT.

Joy Yarrington (*Ensemble*) – Lansing, MI. Sophomore Eastern HS. This is the first performance Joy has been in with this kind of professional caliber. Her previous experience in community musicals and dinner theatres has fueled a passion for theatre for as long as she can remember. Joy would like to thank everyone who worked on *For Tonight*, and you, the audience!

Gabrielle Lossia (*Assistant Stage Manager*) – Grand Blanc, MI; Senior, Business and Theatre. Gabrielle is a member of the honors college with a background in dance at Terry Matlocks School of Performing Arts and DeCamps Spotlight School of Dance. She offered choreography for GBHS since 2011, was stage manager for Young Playwright's Festival and ASM for *Macbeth*. Thanks to the department for this amazing opportunity as well as the stage management team for their tutelage.

Ellie Seelye (*Assistant Stage Manager*) – Otsego, MI; Senior, Theatre and Creative Writing. Ellie is super excited to be co-directing the Student Production of *No Exit* and to *SM Pride and Prejudice* next spring. She plans to move to Chicago after graduating.

MUSICAL NUMBERS

ACT I

"Away"	Male & Female Romani, Young Haydon, & Ensemble
"Keep It In"	Haydon & Ensemble
"Stay"	Haydon & Henrietta
"Come Along"	Mirela, Haydon & the Romani people
"Our Little Secret"	Molly & Henrietta
"All This Time"	Henrietta
"Keeping Us Alive"	Winn, Haydon & Male Ensemble
"For Tonight"	Mirela & Haydon
"Wait For the Morn"	Thomas & Haydon
"Home"	Haydon, Mirela, Thomas, Henrietta & Ensemble

ACT II

"Dark and Bright"	Haydon, Mirela & Ensemble
"Suo Gan"	Molly, Haydon, Mr. & Mrs. Parry & Ensemble
"One Step (Don't Forget Me)"	Mirela & Ensemble
"Home (Reprise)"	Henrietta
"Oh Love of Mine"	Full Cast
"No One Knows"	Thomas, Haydon & Ensemble
"Process"	Molly, Thomas, Mirela & Haydon
"Just When"	Mirela, Haydon & Ensemble
"Hymn For Nettie"	Full Cast

MUSICIANS

Piano/Conductor	David Wendelberger
Guitar	Matt LoRusso
Percussion	Ethan Lucas
Violin	Grace Hinkley

.....
For Tonight will run approximately 2 hours including one intermission.
.....

WHEN ENTERING THE THEATRE

Please turn off cell phones, mobile devices, alarm watches and anything that makes noise. The video and/or audio recording of this performance by any means are strictly prohibited.

SPECIAL EVENTS

.....
Post-Show Discussion with Guest Director, Actors and Writers following EACH performance.
.....

GUEST ARTISTS IN RESIDENCE



JOE BARROS (*Director/Choreographer*) is a director and an award-winning choreographer with an emphasis on new work development. Joe returns to MSU after having directed/choreographed last season's production of *Carrie* (recipient of SDCF's Guest Artist Initiative program). Broadway: *Gigi* (Associate Director, directed by Eric Schaeffer), New York: *I Married Wyatt Earp* (59E59 Theatres), *Hard Times* (NY IT Award Nominee, Best Choreography, NY Times Critics' Pick), *Charlotte's Web* (Theatreworks USA), *Hair* co-creator Jim Rado's *Supersoldier*, Michael John LaChiusa's *Marie Christine* (3LD), plus Transport Group, Culture Project, NYMF, Fringe NYC. Regional: the Broadway bound musical *Beaches* at Chicago's Drury Lane, Goodspeed Musicals, DC's

Tony Award®-winning Signature Theatre, and most recently conceived/directed/choreographed the new musical *Small Town Story* at The Hartt School (University of Hartford). Member: SDC. Artistic Director: NY Theatre Barn. BFA: Hartt. Conceiver/co-writer: *Sticks + Stones* - a new musical about bullying told through the eyes of teenagers. Teaching: Broadway For All, Inside Broadway, TVI Actors Studio, MSU. Upcoming: *King Kong* (Broadway workshop), and the Broadway productions of *Beaches* and *Thrill Me: The Leopold and Loeb Story*. www.joebarras.com.

SHENELLE WILLIAMS (*Book/Music/Lyrics*) is a composer / arranger, music director and music educator. Her most recent work *For Tonight* has been seen at the *New York Musical Theatre Festival* as a developmental reading in July 2014, Goodspeed Musicals' *New Works Festival* in January 2015 and will also be featured at *TheatreFest '15* on the Isle of Man, UK in October 2015. "One Step (Don't Forget Me)", was just a Top 12 finalist in the 'Drewe & Stiles Best Song Award' and was performed in the West End, at the Garrick Theatre in May 2015. Shenelle musically directed and scored the high school premiere of Duncan Sheik's *Whisper House*, and has been teaching K-12 music for over 10 years at various schools across the country. MAT: Music Education from The University of the Arts and member of ASCAP. Upcoming projects: *Luz y Amor*, a new musical and *The Lake of Love* - a ghostly musical tale.



SPENCER WILLIAMS (*Book/Music/Lyrics*) - Spencer is a composer, educator, director, and producer from San Diego, CA. *For Tonight* - 2014 *New York Musical Theatre Festival*, Goodspeed Musicals' *New Works Festival*, and Isle of Man's *Theatrefest '15* (UK Premiere). "One Step" - Top 12 finalist in the 'Drewe & Stiles 2015 Best Song Award' and performed in the West End (Garrick Theatre). Spencer recently directed and produced *An Evening with Stuart Brayson* (US Premiere), *Whisper House* (high school premiere) and *Les Miserables*. He currently teaches Drama and Voice at the prestigious Bishop's School in La Jolla, CA coming directly from an eight-years of teaching at Pinewood School in Los Altos Hills, CA where he was the Performing Arts Director. Upcoming projects: *Luz y Amor*, a new musical. Member of ASCAP, NAMT, Mercury Musicals Development and Musical Theatre Network. Love to Shenelle & Thomas. www.spencertwilliams.com.



The Director-Choreographer is a member of the **STAGE DIRECTORS AND CHOREOGRAPHERS SOCIETY**, a national theatrical labor union.

WHO'S WHO IN THE CAST

shown nothing but enthusiasm and support for everything he does. He loves you. Enjoy!

Roberta Glennon-Rule (*Ensemble*) - Lansing, MI; Junior, Everett High School. Roberta's past performances include *Annie*, *Pajama Game*, *Anything Goes*, *Little Women*, *The Wiz*, and the Take It From The Top programs. She has also performed at events including Special Olympic Games/Fundraisers, MEA state conference, and Tri County Talent to name a few. Roberta would like to express her gratitude for all those involved with *For Tonight* - and to imáGen and DOT for this opportunity supporting high school students, such as herself, as they pursue their love of musical theatre. It has truly been an honor.

Katelyn Hodge (*Mirela Understudy*) - Clawson, MI. Sophomore BFA Acting and minor in Musical Theatre. Katelyn is so excited to understudy for such an amazing role! Favorite past roles include Jo March in *Little Women* and Crissy in *Hair* at MSU. She'd like to thank her friends and family for their constant support!

Jonathan Hamilton (*Mr. Parry*) - Jackson, WY; BFA Acting. Jonathan is thrilled to be making his MSUDOT main stage debut with *For Tonight*. After switching majors nine times, he finally followed his heart and dreams to pursue a life in the theatre. He was accepted into the BFA acting program last spring and hasn't looked back. He would like to thank everyone in the DOT for supporting him in his new journey, as well as Dr. Doug Estry for helping to get him started on this exciting new path.

Joe Hostnik (*Ensemble*) - Hartland, MI; Sophomore BA in Theatre and Pre-medical/Genetics. This is his third production at Michigan State and his first time participating with the imáGen program. Other productions he's been a part of include *Hair the Musical*, *Shrek the Musical* as Shrek, and *Lost in Yonkers* as Jay.

Greg Hunter (*Romani Male*) - Atlanta, GA; 1st Year MFA Acting Candidate. Greg is thrilled to make his MSU debut with *For Tonight!* He performed as Tom Collins in *RENT* at Actor's Express, Billy in *Stinky Kids* at Synchronicity Theatre, and was a featured tap dancer in *Mary Poppins* at the Aurora Theatre. He would like to thank his MSU faculty for this opportunity, and hopes you thoroughly enjoy the show! www.greg-hunter.wix.com/actor

Lukas Jacob (*Thomas*) - Waterford, MI; Sophomore BFA Acting. Lukas has been a part of three productions here at MSU. He played the role of Fleance in *Macbeth* (dir. Ann Folino White) and also played the role of Robin in *Make Me Famous* (dir. Dionne Odell). Lukas is very thrilled to be a part of this new wave of musical theatre and he wants to thank Joe Barros for giving him such an amazing opportunity.

Ethan Drexler Kohagen. (*Young Haydon*) Chesaning, MI. Thirteen, Chesaning Middle School. This is Ethan's first performance at MSU. However, he is not unfamiliar with the stage. You may have seen Ethan in *Mary Poppins* at OCP. He plans to keep musical theatre with him throughout high school. He would like to thank his parents for all they have done. Enjoy the show!

Hannah Martin (*Henrietta*) - Grand Ledge, MI; Junior BFA Acting and Wharton Center intern. Hannah is so excited to be a part of this beautiful production. Last year, Hannah performed in the inaugural Wharton Center and MSU collaborative imáGen production, *Chess*. She would like to thank everyone involved, especially the *For Tonight* creatives, Joe, Dave, and the remarkable cast.

James Martin (*Young Thomas*) - Grand Ledge, MI; Sophomore, Homeschool. This is James' thirteenth show, and some favorites include *Music Man* (Tommy Djillas), *Titanic the Musical* (3rd officer Pittman), *The Lion*,

MSU FEDERAL CREDIT UNION
institute for **ARTS & Creativity**
at whartoncenter

Enriching lives by strengthening the value of the arts in day-to-day life through participatory lifelong learning programs, including:

**Kennedy Center Partners in Education
Professional Development Series**

Act One Family & School Series Performances

Eye for Broadway
Arts Integration Initiative

imáGen

Collaboration with MSU's Department of Theatre and College of Arts and Letters

Ovation Awards

Celebrating Excellence in High School Musical Theatre

Take It From The Top
Musical Theatre Summer Intensives

Young Playwrights Festival

Engagement Initiatives
Spotlight Dinners - After Chats - Insight Previews

Grandparents University

Other programs include: Master Classes, Artists in Residence, on-site college classes; and other interactive programs that integrate performing arts into K-12 curriculum for almost 29,000 children each year, and touch the lives of countless adults.

For more information on these and other programs offered by Wharton Center, please visit:

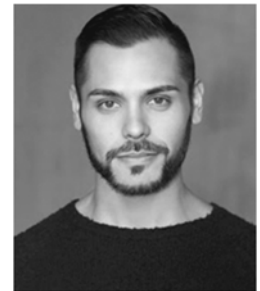
whartoncenter.com/education-engagement



WHITNEY RHODES (*Book*) is a theatre artist based out of Minneapolis, Minnesota. She has been seen onstage with Theater Latte Da, Park Square Theatre, Old Log Theatre, Actors Theatre of Minnesota, Children's Theatre Company, Minnetonka Theatre and as a part of the Minnesota Fringe Festival. She is the creator, producer and performer of her one-woman cabaret trilogy *Where's My Parade?*, a spin-off cabaret *Where's My Tony?* and a series of benefit concerts (*The Could Be Project*, *Dear 27: Let Hope Win* and *Dear 28: The Songs in My Head*). She is an Artistic Associate with The Catalysts, a Minneapolis-based theatre company that creates and produces new and inventive musical theatre dedicated to social justice and the full scope of human potential.

The Catalysts have successfully produced four Top-10 selling original musicals at the Minnesota Fringe Festival since 2011. Additionally, Whitney is the book writer of *For Tonight: A New Musical* which has been featured as a part of the New York Musical Theatre Festival, Goodspeed Festival of New Musicals and upcoming productions at the Isle of Man Theatre Fest and Michigan State University.

ADAM THEODORE BARRY (*Haydon*) is thrilled to continue his work with *For Tonight* after appearing in the original demo recordings, and performing in the ensemble when the show debuted at the New York Musical Theatre Festival in 2014. Most recently, Adam performed the role of Lonny in *Rock of Ages*. Other credits include *Rock of Ages* (Mayor/Ja'Keith), *Burn the Floor* (Principal Vocalist), *Cats* (Alonzo), *RENT* (Angel), *Xanadu* (Sonny), *Beauty and the Beast* (Gaston), *A Chorus Line* (Mike), *Secret Garden* (Fakir). Adam is an alumni of CAP21 Musical Theatre Conservatory.



HANNAH ELLESS (*Mirela*) made her Broadway debut singing "Bless the Lord" in the revival of Stephen Schwartz's *Godspell* followed by a very "Neil" turn in the Drama Desk-nominated *The Other Josh Cohen* under the direction of Tony Award-winner Ted Sperling. She recently starred as Elise McKenna in the new musical *Somewhere in Time* at Portland Center Stage and can be seen this fall in Steve Martin and Edie Brickell's world premiere musical, *Bright Star*. Her television and film credits include Fox Television's *Glee*, *Before Winter*, *The Lake Effect*, and the upcoming film *When Mary Met Ally*. Ms. Elless has been a part of several readings, workshops & concerts in New York City including performances at Birdland Jazz Club, 54 Below, The Carlyle, Lincoln Center and many more. She is also an accomplished musician, playing over six different instruments! Ms. Elless received a BFA from Western Michigan University. You can find her on social media @HannahElless and online at www.hannah-elless.com.

Lincoln Center and many more. She is also an accomplished musician, playing over six different instruments! Ms. Elless received a BFA from Western Michigan University. You can find her on social media @HannahElless and online at www.hannah-elless.com.

STEFANIE DIN (*Stage Manager*) has been an Equity Stage Manager since 2006, when she got her card straight out of her Apprenticeship at The Purple Rose Theatre Company in Chelsea, MI. Since then, she has worked in Detroit, and Milwaukee, is entering her 8th Season as a Stage Manager at The Williamston Theatre in Williamston, has been the Production Stage Manager for The Michigan Shakespeare Festival since 2009, and is the Tour Coordinator/Tech Director for the MSF's High School Touring productions of *Romeo and Juliet*, and *Macbeth*. Stefanie loved being part of Central Michigan University's theatre department, and is beyond honored to be joining the MSU theatre family, and would like to thank Rob, Kirk, and Alison for bringing her in. She would also like to thank Tony and Jan for being amazing bosses, and friends, and her amazing family and friends for their never-ending love and support. Special thanks to Keeley, who is a constant source of inspiration and light, and to Brian, her ultimate mentor, and hero for life.



PRODUCTION TEAM

Stefanie Din*	Stage Manager
Sandy Thomley+	Senior Production Manager
Steve Heinrick+ & Maureen Murphy+	Production Managers
Dustin Peiffer+	Sound Design
Jim Peters+	Lighting Design
Zuwaib Razzaq	Assistant Director/Dramaturg
Ellie Seelye & Gabrielle Lossia	Assistant Stage Managers
Kirk Domer~	Scenic/Properties Coordinator MSU Department of Theatre Chairperson
Mike Brand	Executive Director of Wharton Center
Bert Goldstein	Director of the Institute for Arts & Creativity
Kellyn Uhl	MSU Theatre: Musical Theatre & Dance Interim Associate Director of the MSUFCU Institute for Arts & Creativity
Rob Roznowski*	MSU Theatre: Head of Acting and Directing
Dave Wendelberger	MSU Theatre: Musical Theatre & Publicity
Brad Willcuts*	MSU Theatre: Musical Theatre & Dance
Jason Price	MSU Theatre: Sound Design
Angie Wendelberger	MSU Theatre: Costume Technologist
Laurie Briseno	Institute for Arts & Creativity: Educational Program Coordinator
Hannah Martin	Institute for Arts & Creativity: Intern

*Member of Actors' Equity Association +Member of IATSE ~Member of United Scenic Artists

SPECIAL THANKS

Parents/Guardians of all youth performers, Kris Koop Ouellette, Andraya Salsido, Andrew Van Otteren, Stacey Greisinger, Sherry Stevens, and...
Wharton Center's Marketing & Communications and Ticketing & Digital Services Teams

WHO'S WHO IN THE CAST

Isabella Jolie Abuan (*Ensemble*) – Okemos, MI. Home Schooled, H.S. Freshman. Isabella has been in numerous musicals with Homeschool Performing Arts. She recently participated in the Wharton center program, Take it from the Top. She would like to thank her parents for all of their love and support.

Janette Angelini (*Romani Female*) – Chicago, IL; Sophomore BFA Acting. Janette is stoked to be in this production of *For Tonight*. Recent/favorite credits include *Legally Blonde: The Musical* (Paulette Bonafonte), *RENT* (Joanne), *Carrie: The Musical* (Swing) and *Macbeth* (Ensemble). Janette would like to thank her parents for their unbelievable support and love. Enjoy the show!

Shelby Antel (*Molly*) – Saugatuck, MI; Sophomore BFA Acting. Shelby is overjoyed to be working with this wonderful cast and crew and to be part of an amazing show such as *For Tonight*. Recent shows at MSU include last year's *Freshman Showcase* and *Macbeth*. Thanks to Mom, Dad, and sibs for never-ending love and support.

Emma Callis (*Ensemble*) – East Lansing, MI; Sophomore BFA Acting. She is very excited to join the cast of this production of *For Tonight*! She was most recently seen in productions of *Macbeth*, *Romeo & Juliet*, and *Legally Blonde: The Musical*.

Fiona Colson (*Young Nettie*) – Lansing, MI; Lewton Elementary. Fiona will be performing the role of Tiny Tim in *The Christmas Carol* at Riverwalk Theatre, where she also performed the role of Tinkerbell in *Peter Pan*, with the Young Artisan Workshop. Fiona has sung with The Community Music School Singers at MSU for the last three years.

Jacob Covert (*Haydon Understudy*) – Coldwater, MI; Sophomore BFA Acting. Jacob has grown up doing shows at his

hometown Tibbits Opera. He was last seen in MSU's production of *Hair the Musical* as Claude. Jacob is so happy to be a part of this amazing department and equally thrilled to be a part of such an incredible new piece of work with this amazing cast! *For Tonight* is definitely going places.

Rachael Dec (*Ensemble*) - Holt, MI; Freshman, Lansing Catholic High School. Rae is honored to work with the talented cast and crew of *For Tonight* and gives credit and hugs to instructors Terri Hayden, Karyn Perry, and Mark Ruhala. Recent stage credits include: Peppermint Creek's *Parade the Musical*, and OCP's *Mary Poppins, Holiday*, and *Shrek the Musical*.

Ryan Duda (*Ensemble*) – Northville, MI; Sophomore, BFA Acting and minor in Arts & Cultural Management. Ryan is thrilled to participate in his second ĩmáGen program, having performed as Walter in *Chess* last season. Other MSU credits include *Hair* (Paul), and *The Tail of Peter Rabbit* (Peter). Ryan also works as a Collaborative Instructor for 4th Wall Theatre Company, teaching performing arts to students with intellectual disabilities. Thank you to his closest friends and mentors for their overwhelming support, and to his loving family for always pushing him to follow his dreams.

Trevor Earley (*Winn*) – East Lansing, MI; Sophomore BFA Acting and Political Science. A few previous works have included roles in *Funeral Parlor*, *The World Goes Round*, *Hairspray*, and *Grease*. He would like to thank Spencer, Shenelle, and Whitney for creating this wonderful show and allowing us Spartans to bring it to life. He would also like to thank this absolutely dynamite cast for giving 110% on this production and for being amazing people. Lastly, he would like to thank his wonderful family who, through the duration of this bizarre collegiate journey thus far, have



MSU FEDERAL CREDIT UNION
institute for **ARTS & Creativity**
at whartoncenter

This exciting ĩmáGen staged concert event will showcase Broadway stars, local high school students and MSU Theatre students in performance on the same stage as part of the Musical Theatre Immersion Program at MSU, a collaborative venture with the MSUFCU Institute for Arts & Creativity at Wharton Center and the MSU College of Arts and Letters' Department of Theatre.



DEPARTMENT OF THEATRE
www.theatre.msu.edu